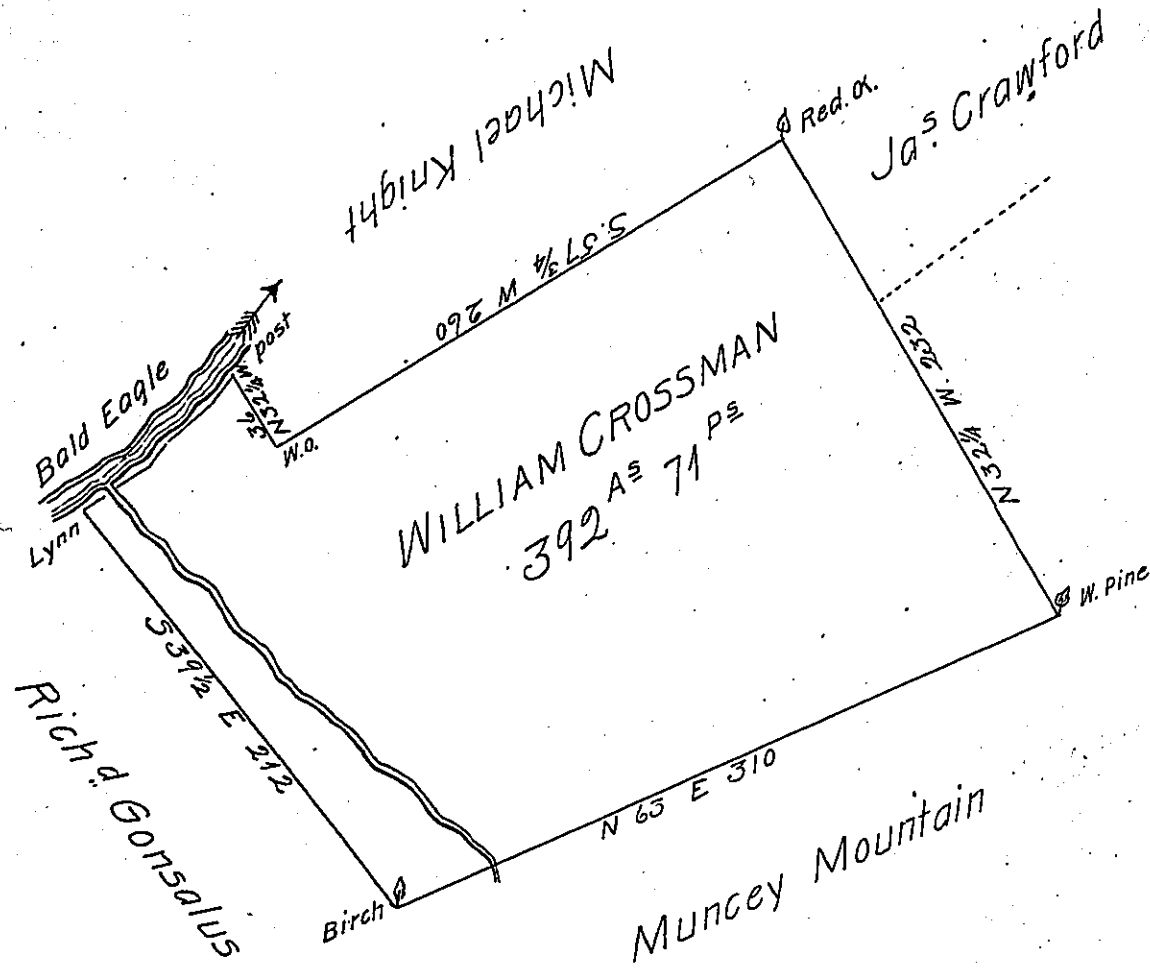


Courses & Dist^a
 Down Bald Eagle
 S 38 W 14
 S 44 W 14
 S 51 W 10
 S 35 W 12
 S 61³/₄ W 31¹/₂
81¹/₂



A draught of a tract of land situate in Centre township in Centre County containing three hundred & ninety two acres 71 perches & the allow^a of six P Cent for roads &c.^a surveyed for W^m Crossman April 11th 1801 resurv^d Feb^y 7th 1809 in pursuance of his war-rant dated May 13th 1793.

James Harris D.S.

To Samuel Cochran Esq^r }
 Surv^r Gen^l }

IN TESTIMONY that the above is a copy of the original remaining on file in the Department of Internal Affairs of Pennsylvania, made conformably to an Act of Assembly approved the 16th day of February, 1833, I have hereunto set my Hand and caused the Seal of said Department to be affixed at Harrisburg, this ninth day of May 1904

James P. Brown
 Secretary of Internal Affairs.